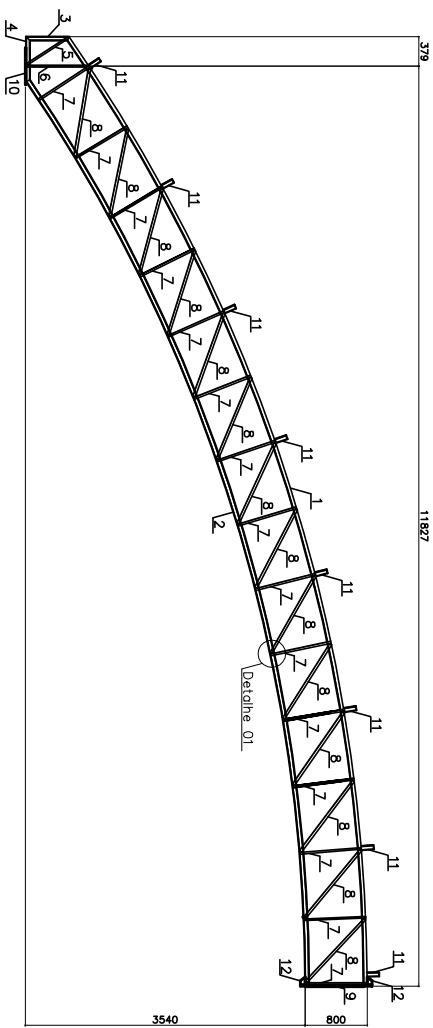
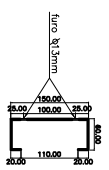


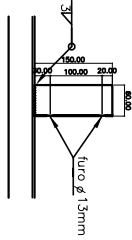
Det. Ligação Central



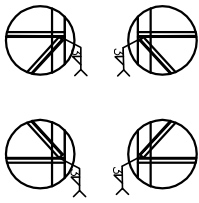
Tessoura A



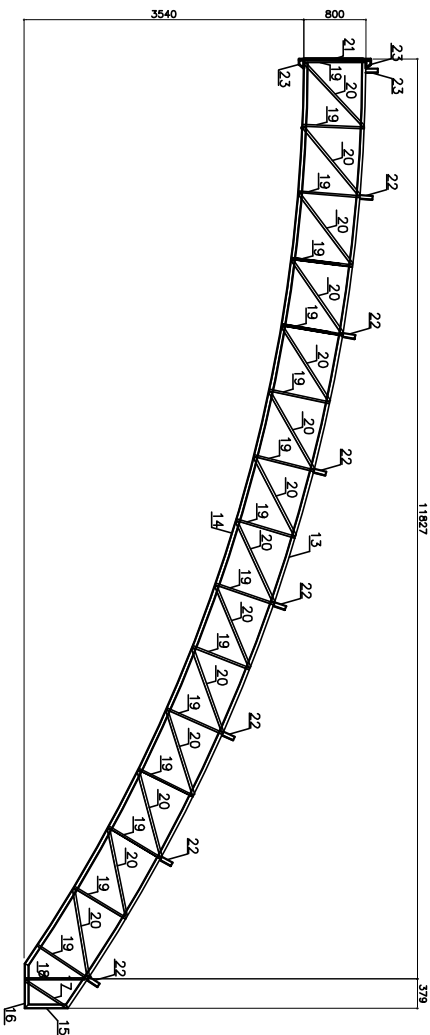
Det. da Função



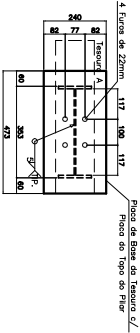
Det. Suporte Terça



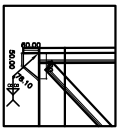
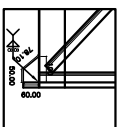
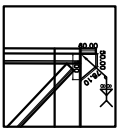
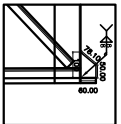
Ligações soldadas
Detalhe 01



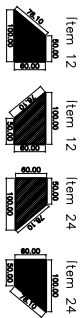
Tessoura B



Ligação Tesoura-Pilar



Solda dos fiems 12 e 24
Detalhe 02



Det. fiems 12 e 24

QUANTITATIVO - ASTM A58		PESO UNITARIO		PESO TOTAL	
1	01	UH150x60x8,42x1300	7,80	58,80	
2	01	UH150x60x8,42x1200	6,83	64,28	
3	01	UH150x60x8,42x1240	6,83	3,78	
4	01	UH150x60x8,42x675	6,83	3,83	
5	01	UH150x60x8,42x575	6,83	1,50	
6	02	L17x116x7-6830	1,18	1,83	
7	02	L17x116x7-720	1,18	28,20	
8	28	L114x71,14x116x7-128	1,50	47,29	
9	01	CH 473x240x10	16,16	16,16	
10	01	CH 473x240x10	6,91	6,91	
11	08	UH150x60x8,42x150,0	6,83	8,20	
12	02	CH 100x60x10	0,47	0,94	
13	01	TESSOURA A	302,50	302,50	
14	01	UH150x60x8,42x1300	7,80	98,80	
15	01	UH150x60x8,42x1240	6,83	64,28	
16	01	UH150x60x8,42x1200	6,83	3,78	
17	01	UH150x60x8,42x675	6,83	3,83	
18	01	UH150x60x8,42x575	6,83	1,50	
19	02	L17x116x7-6830	1,18	2,81	
20	28	L114x71,14x116x7-128	1,19	28,20	
21	01	L174x71,14x116x7-128	1,50	47,29	
22	08	UH150x60x8,42x150,0	6,83	16,16	
23	02	CH 100x60x10	0,47	0,94	
TOTAL		TESSOURAS	26,57	26,57	
TOTAL		DESCRIÇÃO			
TOTAL		DESCRIÇÃO			
TOTAL		DESCRIÇÃO			
TOTAL		DESCRIÇÃO			
TOTAL		DESCRIÇÃO			
TOTAL		DESCRIÇÃO			
TOTAL		DESCRIÇÃO			
TOTAL		DESCRIÇÃO			
TOTAL		DESCRIÇÃO			
TOTAL		DESCRIÇÃO			
TOTAL		DESCRIÇÃO			

PREFEITURA DO MUNICÍPIO DE VARGINHA
SEPLA - SECRETARIA MUNICIPAL DE PLANEJAMENTO URBANO

PROJETO: PREFEITURA MUNICIPAL DE VARGINHA
PROJETO: JOINTUNAS LEÃO SOARES
DETALHE DAS TESSOURAS NO EIXO 8

PROJETO: CONTINÚO DA PREFEITURA
DETALHE DAS TESSOURAS A E B UTILIZADAS NO EIXO 8